



# Lookout, Bedrock, Petes Lake, Horse Creek, and Pothole Fires

Wednesday, September 20, 2023 - Morning Update

*Join us tonight at 7 pm for a Facebook Live virtual meeting. The meeting will be broadcast on each of the fire Facebook pages. There will be a question-and-answer session following the presentations. For those who cannot attend, it will be recorded and available for viewing.*

## Current Status:

**Lookout Fire: Size:** 25,640 acres | **Start Date:** August 5 | **Cause:** Lightning | **Containment:** 50%

**Bedrock Fire: Size:** 31,590 acres | **Start Date:** July 22 | **Cause:** under investigation | **Containment:** 98%

**Petes Lake Fire: Size:** 3,144 acres | **Start Date:** August 25 | **Cause:** Lightening | **Containment:** 0%

**Horse Creek Fire: Size:** 763 acres | **Start Date:** August 24 | **Cause:** Lightning | **Containment:** 100%

**Pothole Fire: Size:** 109 acres | **Start Date:** August 25 | **Cause:** Lightning | **Containment:** 100%

**Total Personnel:** 925

**Total Assigned Resources:** 32 engines | 22 crews | 7 dozers | 33 water tenders | 12 masticators | 7 helicopters

**Suppression:** Consistent with making deliberate, risk-informed decisions about how to safely engage the **Petes Lake Fire** relative to the values at risk, firefighters are prepared to continue to assess structures to the east of the Cascade Lakes Highway and improve an existing fuel break between the fire and structures. However, based on the best available science, it is highly unlikely that the Petes Lake Fire will grow beyond its current footprint within the Three Sisters Wilderness. As the chances for precipitation increase today, and even more so later in the week, firefighters may not take action if the fire activity continues to decrease as it has for the previous two days.

Firefighters main focus on the **Lookout Fire** continues to be along the northern edge of the fire, south of Carpenter Mountain. They will be taking appropriate actions where the fire had been active in the recent days, but mindful of the current and expected forecast.

**Suppression Repair:** Firefighters continue to work closely with Resource Advisors to repair the damage to the landscape that occurs during the ongoing fire suppression efforts. Suppression repair is a significant task across the more than 60,000 culminative acres of all the fires. Suppression repair work that firefighters are currently working on across the landscape includes moving downed trees; woody debris removal or chipping; road repair – which includes culvert cleaning for the expected rain; removing protective structure wrap from buildings, bridges, and other infrastructure; and the backhaul of all the equipment brought to the fireline during suppression efforts.

While the task of suppression repair is significant, firefighters only have two remaining suppression repair tasks on the **Pothole Fire** before that work is completed. Suppression repair work on the **Horse Creek Fire** is also nearing completion.

**Burned Area Emergency Rehabilitation (BAER):** On the **Bedrock Fire**, Forest Service Burned Area Emergency Response Teams (BAER Teams) have nearly completed a map of the soil burn severity—in other words, how hot the soil got during the fire. Scientists have learned that what happens to the soil during a fire is a very important indicator of how long it will take an area to recover. This soil burn severity map is critical in the work that happens after the flames

are extinguished and the smoke has cleared. A comprehensive assessment report should be completed in the next several days.

**Weather:** There is a chance for light rain early today as a storm system approaches the area. A cooling trend continues today with highs generally in the upper 50s in the valleys and upper 40s along the ridges and near the Petes Lake Fire. This cooling trend is expected to continue through the week with an increased chance of wetting rain at the end of the week.

**Linn County Evacuations:** Visit the [Linn County Wildfire](#) map for current evacuation information.

**Lane County Evacuations:** Visit the [Lane County Lookout Fire Evacuation Areas](#) map for current evacuation information.

**Deschutes County Evacuations:** Visit the [Deschutes County Emergency Information](#) map for current evacuations information.

**Forest Closures:** Emergency closure orders remain in place for the [Willamette National Forest](#) and the [Deschutes National Forest](#). For information on Oregon hunting regulations and these forest closures, contact [Oregon Department of Fish and Wildlife](#) at (503) 947-6000.

**Restrictions:** Fire Restrictions are in place on the [Willamette National Forest](#) and [Deschutes National Forest](#). [Temporary Flight Restrictions](#) remain in place over the Bedrock and Lookout Fire areas.

**Smoke Outlook:** A [smoke outlook for West-Central Oregon](#) includes the Lookout, Bedrock, Petes Lake, Horse Creek, and Pothole Fires. Another source for air quality information is the [Fire and Smoke](#) map from [airnow.gov](#).

**Fire Information:**

**Email:** [2023.lookout@firenet.gov](mailto:2023.lookout@firenet.gov)

**Phone:** 541-215-6735 (8 a.m. - 8 p.m.)

**Facebook:**

- [Lookout, Horse Creek, and Pothole Fires](#)
- [Bedrock Fire](#)
- [Petes Lake Fire](#)

**InciWeb:**

- [Lookout, Horse Creek, and Pothole Fires](#)
- [Bedrock Fire](#)
- [Petes Lake Fire](#)



# Smoke Outlook

West-Central Oregon - Lookout, Bedrock, and Petes Lake Fires

9/20 - 9/21

Issued by [Wildland Fire Air Quality Response Program](#) on September 20, 2023 at 07:48 AM PDT

## Fire

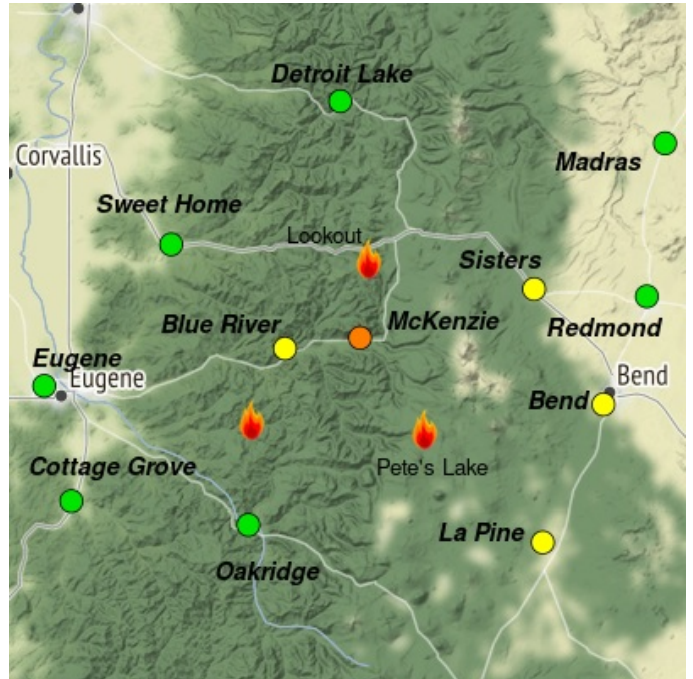
Fire activity has reduced with two days of cool weather and should reduce further with the potential for light rain today and tomorrow. Currently the Lookout fire is 25,515 acres with 50% containment. Petes Lake fire is 3,086 acres with 0% containment. Latest fire information is available at InciWeb: [tinyurl.com/Fire-Information](https://tinyurl.com/Fire-Information)

## Smoke

Smoke production has decreased and air quality will continue to improve as light rain impacts the area today and tomorrow. The winds will shift to come from the north during the day, which will help flush out any lingering smoke in Sisters, Redmond, and Bend. The Willamette Valley and areas north of the fires will continue to have GOOD air quality. La Pine may see periods of MODERATE air quality as winds push smoke into the area. Areas closest to the fires can expect UNHEALTHY conditions peaking in the afternoon.

## Special Statement

The most current conditions can be accessed on the [Fire and Smoke Map](#).



Daily AQI Forecast\* for Wednesday

| Station       | Yesterday hourly |      |    | Tue 9/19 | Comment for Today -- Wed, Sep 20                               | Forecast* |          |
|---------------|------------------|------|----|----------|----------------------------------------------------------------|-----------|----------|
|               | 6a               | noon | 6p |          |                                                                | Wed 9/20  | Thu 9/21 |
| Sweet Home    | [AQI chart]      |      |    | ●        | Air quality will continue to be GOOD in the area.              | ●         | ●        |
| Detroit Lake  | [AQI chart]      |      |    | ●        | GOOD air quality today.                                        | ●         | ●        |
| Cottage Grove | [AQI chart]      |      |    | ●        | Expect GOOD air quality throughout the day.                    | ●         | ●        |
| Oakridge      | [AQI chart]      |      |    | ●        | GOOD air quality throughout the day.                           | ●         | ●        |
| Madras        | [AQI chart]      |      |    | ●        | GOOD air quality today.                                        | ●         | ●        |
| Eugene        | [AQI chart]      |      |    | ●        | GOOD air quality throughout the day.                           | ●         | ●        |
| Redmond       | [AQI chart]      |      |    | ●        | MODERATE air quality early improving to GOOD during the day.   | ●         | ●        |
| Bend          | [AQI chart]      |      |    | ●        | MODERATE air quality today improving later in the day.         | ●         | ●        |
| La Pine       | [AQI chart]      |      |    | ●        | MODERATE air quality as smoke continues.                       | ●         | ●        |
| Sisters       | [AQI chart]      |      |    | ●        | MODERATE air quality during the day with periods of USG.       | ●         | ●        |
| Blue River    | No hourly data   |      |    | ●        | MODERATE air quality with increasing smoke today.              | ●         | ●        |
| McKenzie      | [AQI chart]      |      |    | ●        | MODERATE conditions degrading to UNHEALTHY, peaking at midday. | ●         | ●        |

Issued Sep 20, 2023 by Josh Hall, [joshua.hall@usda.gov](mailto:joshua.hall@usda.gov) & Amara Holder, [holder.amara@epa.gov](mailto:holder.amara@epa.gov)

| Air Quality Index (AQI) | Actions to Protect Yourself                                                               |
|-------------------------|-------------------------------------------------------------------------------------------|
| ● Good                  | None                                                                                      |
| ● Moderate              | Unusually sensitive individuals should consider limiting prolonged or heavy exertion.     |
| ● USG                   | People within Sensitive Groups* should <b>reduce</b> prolonged or heavy outdoor exertion. |
| ● Unhealthy             | People within Sensitive Groups* should <b>avoid all</b> physical outdoor activity.        |
| ● Very Unhealthy        | Everyone should avoid prolonged or heavy exertion.                                        |
| ● Hazardous             | Everyone should avoid any outdoor activity.                                               |

\*Disclaimer: This forecast is based on fine particulates only; ozone is not included. Forecasts may be wrong; use at own risk. Use caution as conditions can change quickly. See your health professional as needed. Smoke sensitive groups should take appropriate precautions.

## Additional Links

[AirNow Fire & Smoke Map](https://fire.airnow.gov) -- <https://fire.airnow.gov>

[Oregon Smoke Blog](https://oregonsmoke.org) -- <https://oregonsmoke.org>

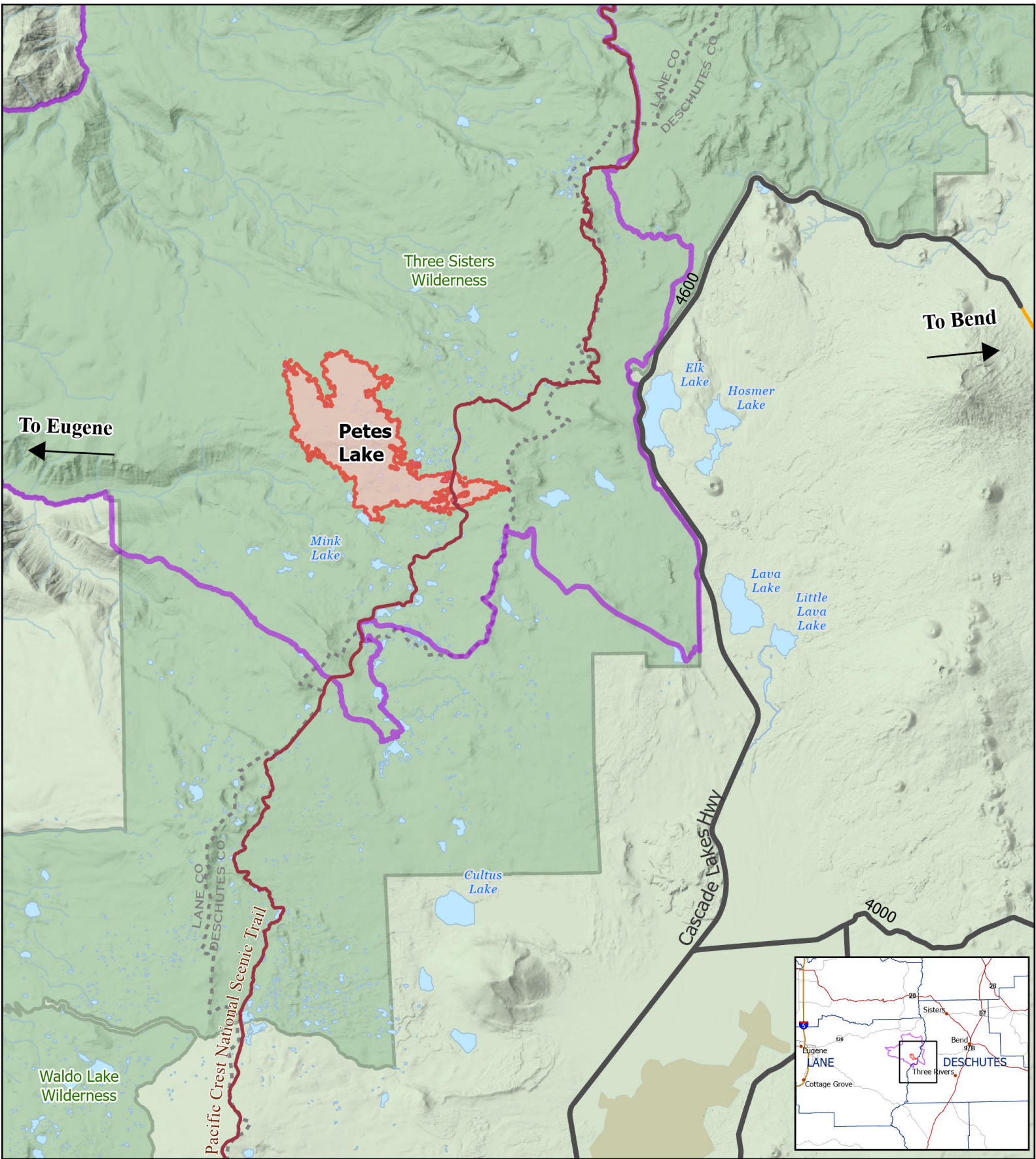
[Oregon Health Authority Community Wildfire Resources](https://www.oregon.gov/oha/ph/preparedness/prepare/pages/prepareforwildfire.aspx) -- <https://www.oregon.gov/oha/ph/preparedness/prepare/pages/prepareforwildfire.aspx>



Issued by Interagency Wildland Fire Air Quality Response Program -- [www.wildlandfiresmoke.net](http://www.wildlandfiresmoke.net)

West-Central Oregon Updates -- <https://outlooks.wildlandfiresmoke.net/outlook/959d2520>





\*Smoke and Health Info -- [www.airnow.gov/air-quality-and-health](http://www.airnow.gov/air-quality-and-health)

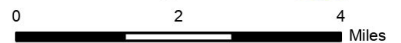


## Information

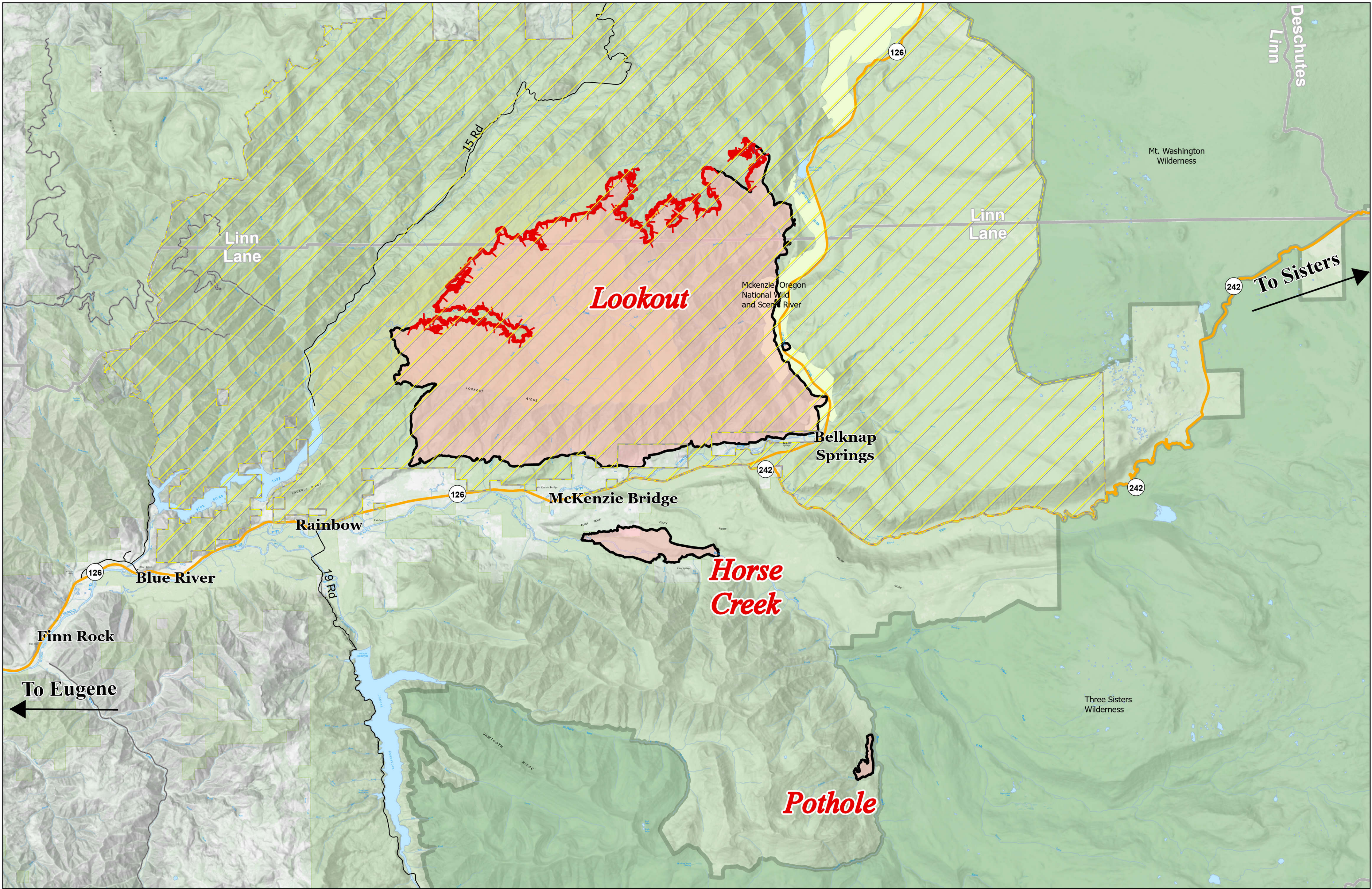
Petes Lake  
 ORWIF-230409  
 09/20/2023

3086 acres at 9/18/2023 @ 1900  
 9/19/2023 2129

-  Closure Area Located on USFS Lands Only
-  Wilderness
-  Fire Area
-  Pacific Crest National Scenic Trail



North American 1983  
 Datum. LatLong Grid



# Information




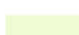

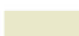

Lookout

ORWIF-230327

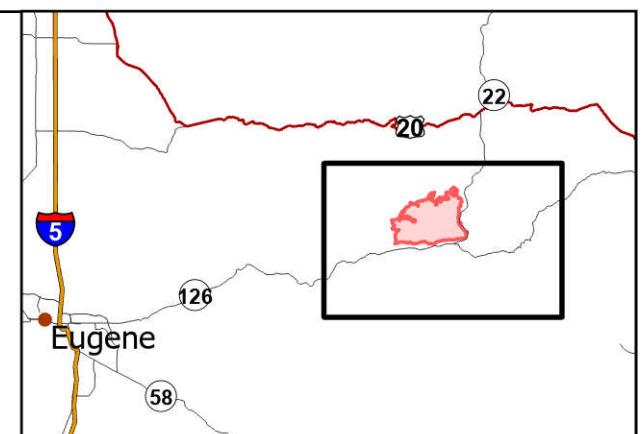
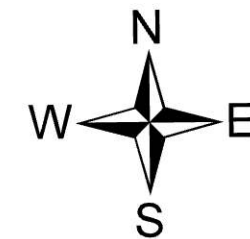
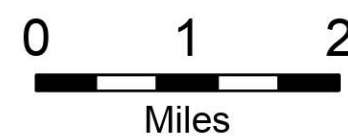
09/20/2023

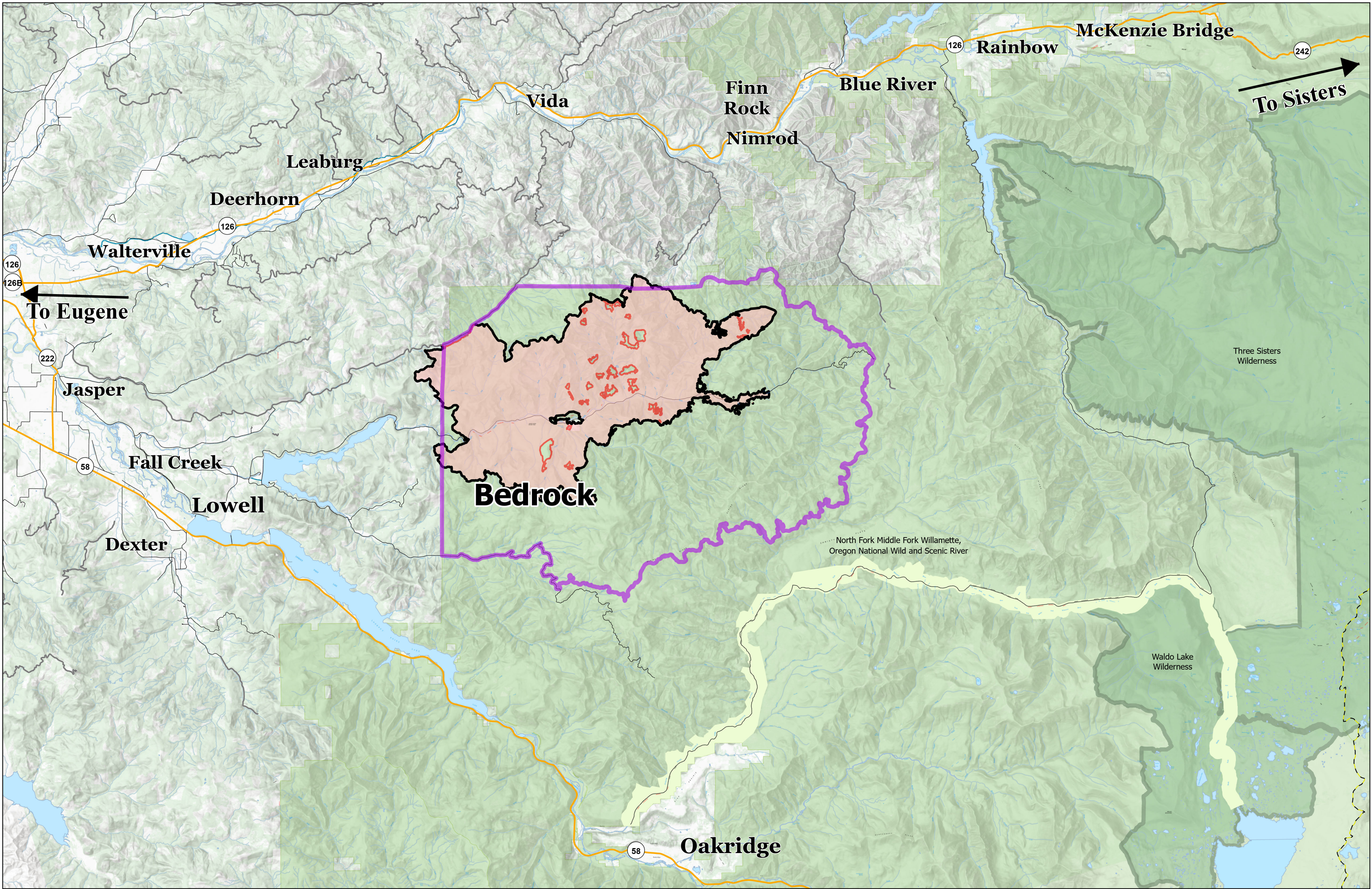
25640 acres at 9/20/2023 @ 0000

Acres from IR & GPS

-  Contained
-  Uncontained
-  Fire Area
-  Wild and Scenic River
-  Wilderness
-  H J Andrews Experimental Forest
-  Closure - Area

Acres from IR & GPS  
North American 1983 Datum. LatLong Grid





# Information

**Bedrock**  
**ORWIF-230266**  
**09/20/2023**  
 31,590 acres at 9/15/2023 @ 1945  
 Acres from IR & GPS

- Fire Area
- Contained
- Closure Area Located on USFS Lands Only
- Wilderness
- Wild and Scenic River

9/19/2023 2034  
 Acres from IR & GPS  
 North American 1983 Datum. LatLong  
 Grid

